



## SUPPORTS WITH RETRACTABLE STRIKING PIN

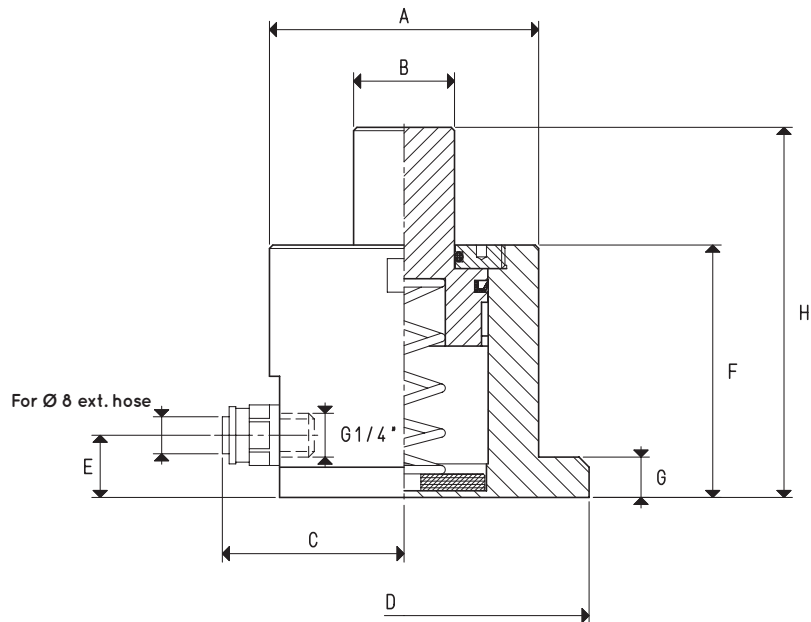
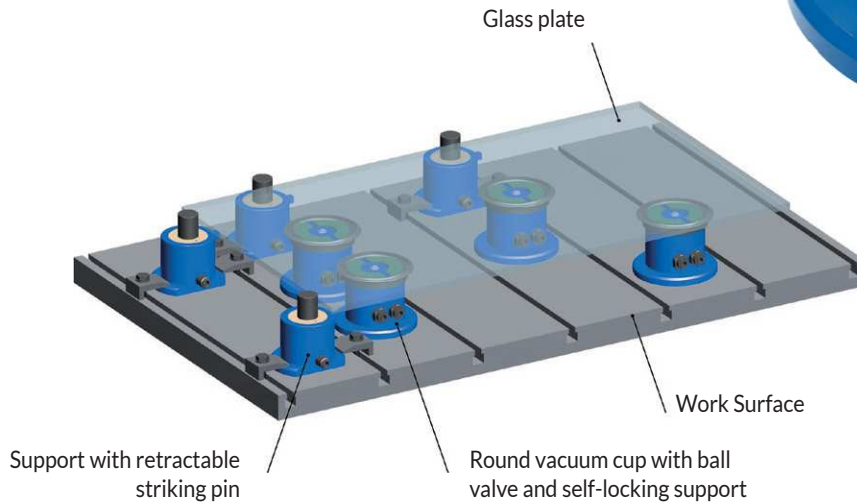
These supports with retractable striking pins have been designed to allow a quick centring of the load to be clamped to the machine work surface via the cups.

The striking pin is solidly connected to a piston and it is activated by the vacuum while retracting and while remaining in its housing and also by a stainless steel spring while coming out.

These supports are mechanically fixed to the work surface.

The striking pin is made of plastic material, while the support is made of anodised aluminium.

They are supplied standard with a quick coupling for vacuum connection.



SUPPORTS WITH RETRACTABLE STRIKING PIN

Item	A Ø	B Ø	C	D Ø	E	F	G	H	Weight Kg
<b>23 01 10</b>	80	30	53	110	18	45	12	63	0.690
<b>23 01 15</b>	80	30	53	110	18	64	12	99	0.846
<b>23 02 10</b>	80	30	53	110	18	75	12	110	0.956
<b>23 05 10</b>	80	30	53	110	18	110	12	180	1.280