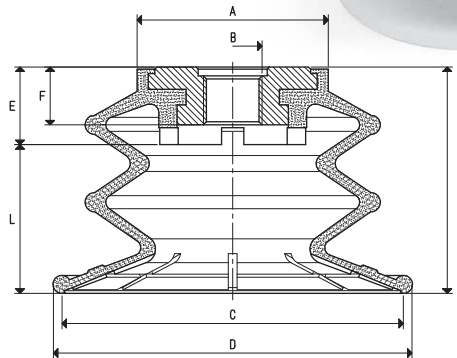




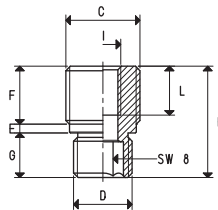
VACUUM CUPS WITH TWO BELLOWS WITH MALE SUPPORTS



VACUUM CUPS

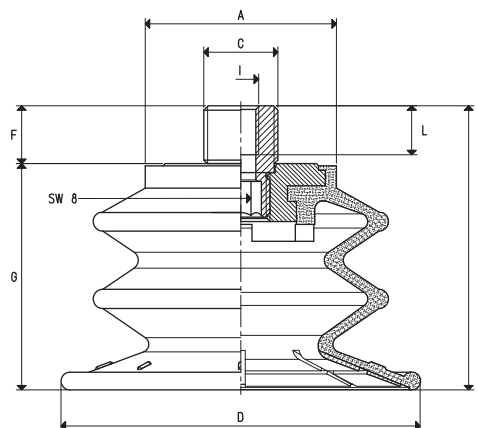
Item	Force Kg	Volume cm ³	A Ø	B Ø	C Ø	D Ø	E	F	H	L	Bellows stroke mm
08 75 43 SR *	11.19	74.3	43.0	G1/4"	75.5	80.5	17.5	13.7	50	32.5	28
08 110 73 SR *	24.17	250.6	63.5	G3/8"	113.4	119.0	25.5	19.4	75	49.5	40

* Complete the code indicating the compound: A= oil-resistant rubber; N= natural para rubber; S= silicon



MALE SUPPORTS

Item	B	C Ø	D Ø	E	F	G	H	I	L	Support material	For vacuum cup item	Weight g
00 08 373	8	G1/4"	G1/4"	2	10	10	22	M8	11	aluminium	08 75 43 SR	4.1
00 08 372	8	G3/8"	G1/4"	2	13	10	25	M8	11	aluminium	08 75 43 SR	7.4
00 08 376	8	G3/8"	G3/8"	3	13	15.5	31.5	M8	11	aluminium	08 110 73 SR	14.1
00 08 375	8	G1/2"	G3/8"	3	13	15.5	31.5	M8	11	aluminium	08 110 73 SR	15.5



VACUUM CUPS WITH MALE SUPPORT

Item	Force Kg	A Ø	B	C Ø	D Ø	F	G	H	I	L	Vacuum cup item	Support item	Weight g
08 75 43 M *	11.19	43.0	8	G1/4"	80.5	10	50	60	M8	11	08 75 43 SR	00 08 373	75.0
08 75 43 3/8 M *	11.19	43.0	8	G3/8"	80.5	13	50	63	M8	11	08 75 43 SR	00 08 372	78.3
08 110 73 M *	24.17	63.5	8	G3/8"	119.0	13	75	88	M8	11	08 110 73 SR	00 08 376	220.3
08 110 73 1/2 M *	24.17	63.5	8	G1/2"	119.0	13	75	88	M8	11	08 110 73 SR	00 08 375	221.7

* Complete the code indicating the compound: A= oil-resistant rubber; N= natural para rubber; S= silicon

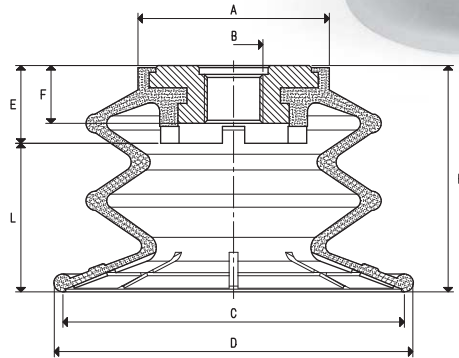
Note: The force of the vacuum cups indicated in the table represents 1/3 of the value of the theoretical force calculated at a level of vacuum of -75 KPa and a factor of safety 3.

Transformation ratio: N (newton) = Kg x 9.81 (force of gravity)

inch = $\frac{\text{mm}}{25.4}$; pounds = $\frac{\text{g}}{453.6} = \frac{\text{Kg}}{0.4536}$

Adapters for GAS - NPT threading available on page 1.130

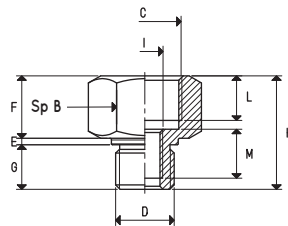
VACUUM CUPS WITH TWO BELLOWS WITH FEMALE SUPPORTS



VACUUM CUPS

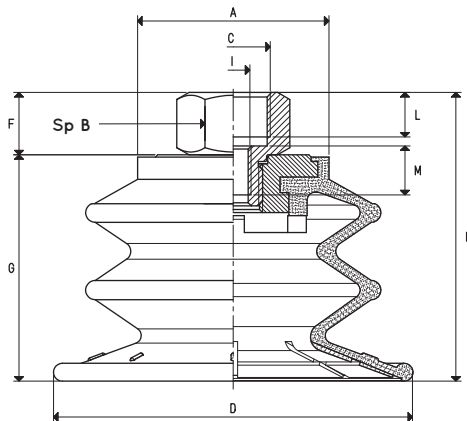
Item	Force Kg	Volume cm ³	A Ø	B Ø	C Ø	D Ø	E	F	H	L	Bellows stroke mm
08 75 43 SR *	11.19	74.3	43.0	G1/4"	75.5	80.5	17.5	13.7	50	32.5	28
08 110 73 SR *	24.17	250.6	63.5	G3/8"	113.4	119.0	25.5	19.4	75	49.5	40

* Complete the code indicating the compound: A= oil-resistant rubber; N= natural para rubber; S= silicon



FEMALE SUPPORTS

Item	B	C Ø	D Ø	E	F	G	H	I	L	M	Support material	For vacuum cup item	Weight g
00 08 374	22	G3/8"	G1/4"	1.5	14	10.0	25.5	M8	10	11	aluminium	08 75 43 SR	12.0
00 08 377	23	G1/2"	G3/8"	3.0	17	15.5	35.5	M8	13	11	aluminium	08 110 73 SR	17.8



VACUUM CUPS WITH FEMALE SUPPORT

Item	Force Kg	A Ø	B	C Ø	D Ø	F	G	H	I	L	M	Vacuum cup item	Support item	Weight g
08 75 43 3/8 *	11.19	43.0	22	G3/8"	80.5	14	50	64	M8	10	11	08 75 43 SR	00 08 374	82.9
08 110 73 1/2 *	24.17	63.5	23	G1/2"	119.0	17	75	92	M8	13	11	08 75 43 SR	00 08 377	224.0

* Complete the code indicating the compound: A= oil-resistant rubber; N= natural para rubber; S= silicon

Note: The force of the vacuum cups indicated in the table represents 1/3 of the value of the theoretical force calculated at a level of vacuum of -75 KPa and a factor of safety 3.

Transformation ratio: N (newton) = Kg x 9.81 (force of gravity)

$$\text{inch} = \frac{\text{mm}}{25.4}; \text{pounds} = \frac{\text{g}}{453.6} = \frac{\text{Kg}}{0.4536}$$

Adapters for GAS - NPT threading available on page 1.130