



REINFORCED BELLOWS VACUUM CUPS WITH MALE AND FEMALE SUPPORTS

The particular shape of these bellows cups allows them to quickly crumple up when in contact with the surface of the load to be lifted and in presence of a vacuum. This quick movement prevents the load below from remaining stuck to the surfaces or load underneath.

Thanks to this particular feature, these bellows cups are recommended for handling paper and cardboard sheets, thin metal sheets, wooden panels, glass sheets etc.

Thanks to their great flexibility, they can also be used to compensate flatness errors or for gripping on inclined surfaces. Their anodised aluminium supports are provided with a threaded male or female central pin to allow suction and to fasten it to the automation. The vacuum cups can be fitted on them without the aid of adhesives.

To replace, simply request the single vacuum cup indicated in the table in the desired compound.



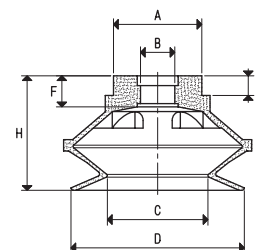
3D drawings are available on viotecnica.net

1

VACUUM CUPS

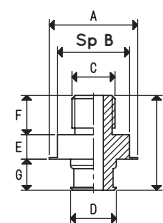
Item	Force Kg	Volume cm ³	A Ø	B Ø	C Ø	D Ø	E	F	H	Bellows stroke mm
01 22 19 *	0.95	2.5	14.5	5.0	11.0	22	4	5.5	19	10
01 34 26 *	2.26	8.0	14.5	5.0	17.0	34	4	5.5	26	12
01 43 28 *	3.62	15.3	20.0	6.5	21.5	43	4	7.0	28	14
01 53 35 *	5.51	30.5	27.0	10.5	30.5	53	6	9.5	35	16

* Complete the code indicating the compound: A= oil-resistant rubber; N= natural para rubber; S= silicon



MALE SUPPORTS

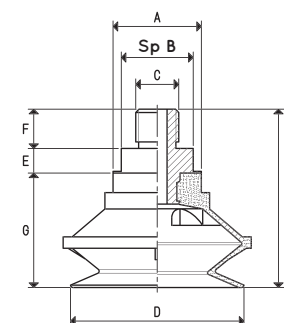
Item	A Ø	B	C Ø	D Ø	E	F	G	H	Support material	For vacuum cup item	Weight g
00 08 133	14.5	13	G1/8"	8.5	5.5	8	5.0	18.5	aluminium	01 22 19 01 34 26	3.5
00 08 135	20.0	17	G1/4"	10.0	7.5	12	7.5	27.0	aluminium	01 43 28	9.5
00 08 142	27.0	22	G1/4"	14.0	7.5	12	9.5	29.0	aluminium	01 53 35	15.7



VACUUM CUPS WITH MALE SUPPORT

Item	Force Kg	A Ø	B	C Ø	D Ø	E	F	G	H	Vacuum cup item	Support item	Weight g
08 22 19 *	0.95	14.5	13	G1/8"	22	5.5	8	19	32.5	01 22 19	00 08 133	6.2
08 34 26 *	2.26	14.5	13	G1/8"	34	5.5	8	26	39.5	01 34 26	00 08 133	15.2
08 43 28 *	3.62	20.0	17	G1/4"	43	7.5	12	28	47.5	01 43 28	00 08 135	18.5
08 53 35 *	5.51	27.0	22	G1/4"	53	7.5	12	35	54.5	01 53 35	00 08 142	33.3

* Complete the code indicating the compound: A= oil-resistant rubber; N= natural para rubber; S= silicon



Note: The force of the vacuum cups indicated in the table represents 1/3 of the value of the theoretical force calculated at a level of vacuum of -75 KPa and a factor of safety 3.

Transformation ratio: N (newton) = Kg x 9.81 (force of gravity)

inch = $\frac{\text{mm}}{25.4}$; pounds = $\frac{\text{g}}{453.6} = \frac{\text{Kg}}{0.4536}$

Adapters for GAS - NPT threading available on page 1.130



REINFORCED BELLOWS VACUUM CUPS WITH FEMALE SUPPORTS

3D drawings are available on vuotecnica.net

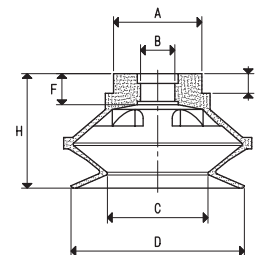
1



VACUUM CUPS

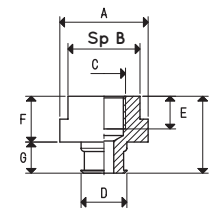
Item	Force Kg	Volume cm ³	A Ø	B Ø	C Ø	D Ø	E	F	H	Bellows stroke mm
01 22 19 *	0.95	2.5	14.5	5.0	11.0	22	4	5.5	19	10
01 34 26 *	2.26	8.0	14.5	5.0	17.0	34	4	5.5	26	12
01 43 28 *	3.62	15.3	20.0	6.5	21.5	43	4	7.0	28	14
01 53 35 *	5.51	30.5	27.0	10.5	30.5	53	6	9.5	35	16

* Complete the code indicating the compound: A= oil-resistant rubber; N= natural para rubber; S= silicon



FEMALE SUPPORTS

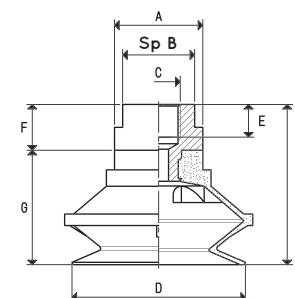
Item	A Ø	B	C Ø	D Ø	E	F	G	H	Support material	For vacuum cup item	Weight g
00 08 132	14.5	13	G1/8"	8.5	8	12	5.0	17.0	aluminium	01 22 19 01 34 26	3.8
00 08 134	20.0	17	G1/4"	10.0	10	14	7.5	21.5	aluminium	01 43 28	8.3
00 08 141	27.0	22	G1/4"	14.0	10	14	9.5	23.5	aluminium	01 53 35	19.7



VACUUM CUPS WITH FEMALE SUPPORT

Item	Force Kg	A Ø	B	C Ø	D Ø	E	F	G	H	Vacuum cup item	Support item	Weight g
08 22 19 F *	0.95	14.5	13	G1/8"	22	8	12	19	31	01 22 19	00 08 132	6.5
08 34 26 F *	2.26	14.5	13	G1/8"	34	8	12	26	38	01 34 26	00 08 132	9.5
08 43 28 F *	3.62	20.0	17	G1/4"	43	10	14	28	42	01 43 28	00 08 134	17.3
08 53 35 F *	5.51	27.0	22	G1/4"	53	10	14	35	49	01 53 35	00 08 141	37.3

* Complete the code indicating the compound: A= oil-resistant rubber; N= natural para rubber; S= silicon



Note: The force of the vacuum cups indicated in the table represents 1/3 of the value of the theoretical force calculated at a level of vacuum of -75 KPa and a factor of safety 3.

Transformation ratio: N (newton) = Kg x 9.81 (force of gravity)

inch = $\frac{\text{mm}}{25.4}$; pounds = $\frac{\text{g}}{453.6} = \frac{\text{Kg}}{0.4536}$

Adapters for GAS - NPT threading available on page 1.130