



SUPPORTS FOR VACUUM CUPS

3D drawings are available on vuotecnica.net

1

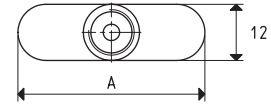
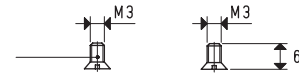
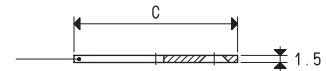
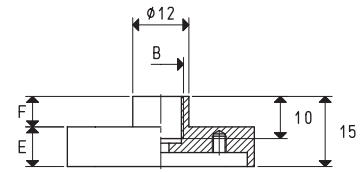
Item	A	B Ø	C	E	F	Support material	For vacuum cup item	Weight g
00 08 71	30	G1/8"	25	8.5	6.5	aluminium	01 12 30	7.8
00 08 75	40	G1/8"	35	8.5	6.5	aluminium	01 12 40	11.4
00 08 76	55	G1/8"	50	8.5	6.5	aluminium	01 12 50	15.5



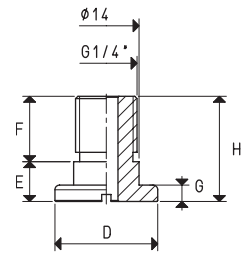
Fixing plate
 item 00 08 98 for supp. 00 08 71
 item 00 08 99 for supp. 00 08 75
 item 00 08 100 for supp. 00 08 76

2 TSP screws M3x5 item 00 08 102

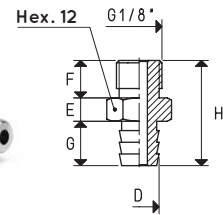
Note: Supplied automatically also with the fixing plate and the TSP screws when ordering the item relative to the support



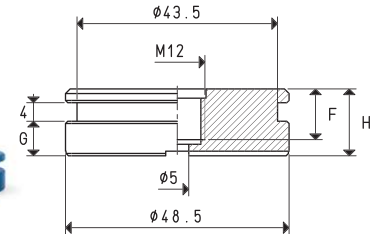
Item	D Ø	E	F	G	H	Support material	For vacuum cup item	Weight g
00 08 81	22	8.5	14	3.5	22.5	aluminium	01 40 18 01 48 18 01 54 18	8.8



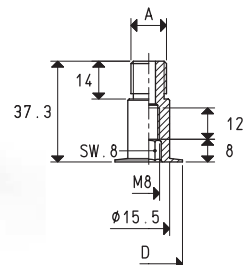
Item	D Ø	E	F	G	H	Support material	For vacuum cup item	Weight g
00 08 82	8.5	5	8	9.5	22.5	brass	01 25 12 01 33 50	11.2



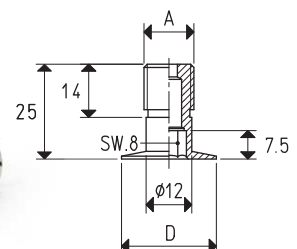
Item	F	G	H	Support material	For vacuum cup item	Weight g
00 08 83	11	7.5	14.5	aluminium	01 56 15	67.4



Item	A Ø	D Ø	Support material	For vacuum cup item	Weight g
00 08 91	M10x1,25	25	brass	01 85 10	38.4



Item	A Ø	D Ø	Support material	For vacuum cup item	Weight g
00 08 92	M10	25	brass	01 45 10 01 60 10	5.2



Transformation ratio: N (newton) = Kg x 9.81 (force of gravity)

$$\text{inch} = \frac{\text{mm}}{25.4}; \text{pounds} = \frac{\text{g}}{453.6} = \frac{\text{Kg}}{0.4536}$$

Adapters for GAS - NPT threading available on page 1.130