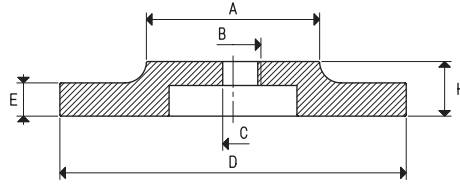




# SUPPORTS FOR VACUUM CUPS

3D drawings are available on vuototecnica.net

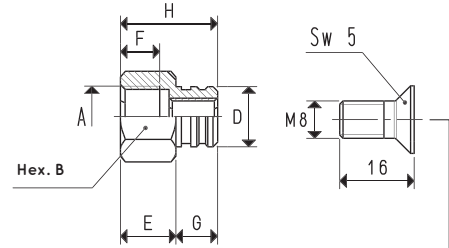


Item	A Ø	B Ø	C Ø	D Ø	E	H	Support material	For vacuum cup item	Weight g
<b>00 08 280</b>	35	G1/2"	--	70	12.5	22.5	aluminium	01 150 55	120
<b>00 08 281</b>	65	G1/2"	--	130	12.5	23.5	aluminium	01 210 60	465
<b>00 08 286</b>	35	--	8	70	12.5	22.5	aluminium	01 150 55	125
<b>00 08 287</b>	65	--	8	130	12.5	23.5	aluminium	01 210 60	470

1

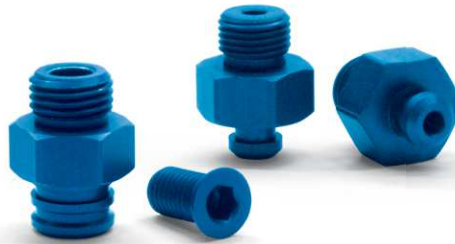


Item	A Ø	B	D Ø	E	F	G	H	Support material	For vacuum cup item	Weight g
<b>00 08 343</b>	G1/8"	14	7.3	10	8.0	5.5	15.5	aluminium	VOP 08 24 SR VOP 10 30 SR VOP 12 36 SR	16.8
<b>00 08 345</b>	G1/4"	17	13.0	12	8.5	9.0	21.0	aluminium	VOP 15 45 SR	19.9
<b>00 08 405</b>	G1/4"	17	13.0	12	8.5	9.0	21.0	aluminium	VOP 20 60 SR VOP 25 75 SR	24.7
<b>00 08 403</b>	G1/4"	17	13.0	12	8.5	9.0	21.0	aluminium	VOP 28 85 SR VOP 35 100 SR	25.6

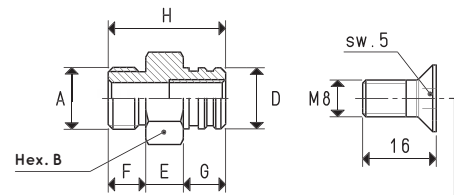


screw  
item **00 08 347** for supp. **00 08 403**  
item **00 08 348** for supp. **00 08 405**

**Note:** Supplied automatically also with the screw when ordering the item relative to the support



Item	A Ø	B	D Ø	E	F	G	H	Support material	For vacuum cup item	Weight g
<b>00 08 344</b>	G1/8"	14	7.3	7	7	5.5	19.5	aluminium	VOP 08 24 SR VOP 10 30 SR VOP 12 36 SR	18.5
<b>00 08 346</b>	G1/4"	17	13.0	8	8	9.0	25.0	aluminium	VOP 15 45 SR	25.0
<b>00 08 404</b>	G1/4"	17	13.0	8	8	9.0	25.0	aluminium	VOP 20 60 SR VOP 25 75 SR	29.8
<b>00 08 402</b>	G1/4"	17	13.0	8	8	9.0	25.0	aluminium	VOP 28 85 SR VOP 35 100 SR	30.7



screw  
item **00 08 347** for supp. **00 08 402**  
item **00 08 348** for supp. **00 08 404**

**Note:** Supplied automatically also with the screw when ordering the item relative to the support

Transformation ratio: N (newton) = Kg x 9.81 (force of gravity)

inch =  $\frac{\text{mm}}{25.4}$  ; pounds =  $\frac{\text{g}}{453.6} = \frac{\text{Kg}}{0.4536}$

Adapters for GAS - NPT threading available on page 1.130