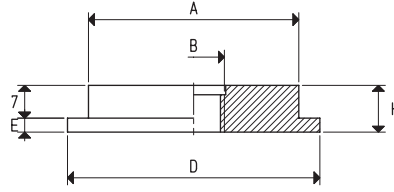


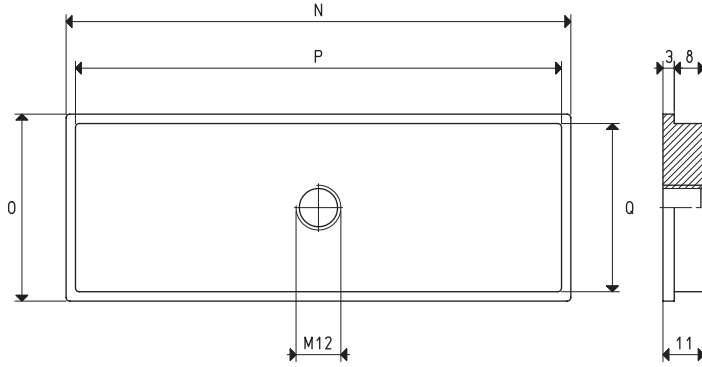


SUPPORTS FOR VACUUM CUPS

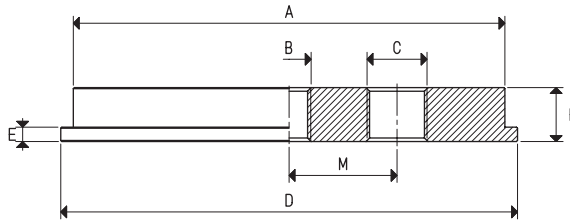
3D drawings are available on vuotecnica.net



Item	A ∅	B ∅	D ∅	E	H	Support material	For vacuum cup item	Weight g
00 08 143	45	G1/2"	54	3	10	aluminium	01 75 42 01 80 20	41.5

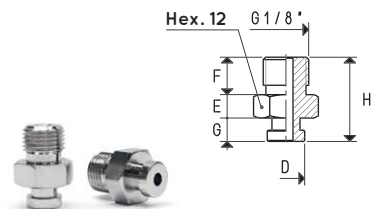


Item	N	O	P	Q	Support material	For vacuum cup item	Weight g
00 08 144	135	50	130	45	aluminium	01 135 50 01 150 65	176.1



Item	A ∅	B ∅	C ∅	D ∅	E	H	M	Support material	For vacuum cup item	Weight g
00 08 145	120	G3/8"	G3/8"	127	4	15	27	aluminium	01 150 10	471.9

Item	D ∅	E	F	G	H	Support material	For vacuum cup item	Weight g
00 08 146	8	5	8	5	18	brass	01 20 12 01 20 14 01 20 15	9.8



Transformation ratio: N (newton) = Kg x 9.81 (force of gravity)

inch = $\frac{\text{mm}}{25.4}$; pounds = $\frac{\text{g}}{453.6} = \frac{\text{Kg}}{0.4536}$

Adapters for GAS - NPT threading available on page 1.130