

VACUUM CUPS WITH VULCANISED SUPPORT

These cups are specially designed for gripping moulded or drawn sheet metal and are largely used in the automotive sector.

Their ground lip allows an immediate gripping of the load even at the slightest resting pressure and ensures perfect vacuum seal.

These cups are produced in a special compound called BENZ, able to withstand the chlorine usually contained in the oils used for moulding and drawing the steel sheets.

The galvanised steel support is vulcanised onto the cup.

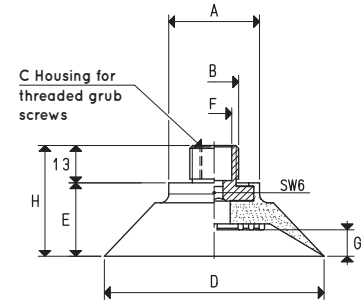
The cups can be provided upon request in minimum quantities in natural para rubber, in silicon or in special compounds, listed on pg. 31.



VACUUM CUPS WITH MALE VULCANISED SUPPORT

Item	Force Kg	Volume cm ³	A Ø	B Ø	C Ø	D Ø	E Ø	F Ø	G	H	Support material	Weight g
08 50 40 *	4.90	10.3	31	G3/8"	--	50	16.0	12	6.5	29.0	steel	38.5
08 50 40 GR B	4.90	10.3	31	G3/8"	G1/8"	50	16.0	--	6.5	29.0	steel	38.5
08 75 40 *	11.04	29.3	31	G3/8"	--	75	25.0	12	9.0	38.0	steel	57.9
08 75 40 GR B	11.04	29.3	31	G3/8"	G1/8"	75	25.0	--	9.0	38.0	steel	57.9
08 75 40 GR N	11.04	29.3	31	G3/8"	G1/8"	75	25.0	--	9.0	38.0	steel	57.9
08 100 40 *	19.62	42.6	32	G3/8"	--	100	26.0	12	9.0	39.0	steel	78.3
08 100 50 *	19.62	70.6	32	G3/8"	--	100	30.5	12	15.0	43.5	steel	74.8
08 50 40 1/4" B	4.90	10.3	31	G1/4"	--	50	16.0	--	6.5	29.0	steel	37.4
08 75 40 1/4" B	11.04	29.3	31	G1/4"	--	75	25.0	--	9.0	38.0	steel	57.6
08 100 40 1/4" B	19.62	42.6	32	G1/4"	--	100	26.0	--	9.0	39.0	steel	76.8
08 50 40 M10 B	4.90	10.3	31	M10	--	50	16.0	--	6.5	29.0	steel	32.7
08 100 50 M10 B	19.62	70.6	32	M10	--	100	30.5	--	15.0	43.5	steel	70.2
08 75 40 M14 B	11.04	29.3	31	M14 x 1.5	--	75	25.0	--	9.0	38.0	steel	54.9
08 100 50 M14 B	19.62	70.6	32	M14 x 1.5	--	100	30.5	--	15.0	43.5	steel	74.9

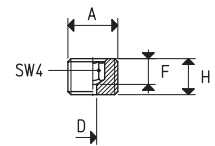
* Complete the code indicating the compound: B= BENZ rubber; N= natural para rubber; S = silicon



THREADED GRUB SCREWS WITH CALIBRATED HOLE

Item	A Ø	D Ø	F	H	Grub screw material	Weight g
00 08 427	G1/8"	1.0	5	11	brass	3.0
00 08 164	G1/8"	1.2	5	11	brass	3.0
00 08 165	G1/8"	1.5	5	11	brass	3.0
00 08 334	G1/8"	3.0	4	13	brass	4.0

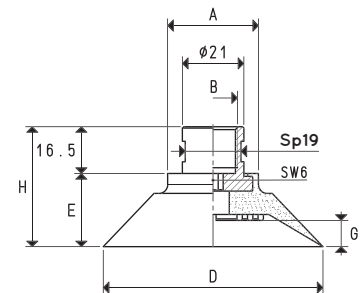
Threaded grub screws with calibrated hole, for vacuum cups with extension GR.



VACUUM CUPS WITH FEMALE VULCANISED SUPPORT

Item	Force Kg	Volume cm ³	A Ø	B Ø	D Ø	E Ø	G	H	Support material	Weight g
08 50 40 F B	4.90	10.3	31	G3/8"	50	16.0	6.5	32.5	steel	49.5
08 75 40 F B	11.04	29.3	31	G3/8"	75	25.0	9.0	41.5	steel	68.3
08 75 40 F S	11.04	29.3	31	G3/8"	75	25.0	9.0	41.5	steel	68.3
08 100 40 F B	19.62	42.6	32	G3/8"	100	26.0	9.0	42.5	steel	89.3
08 100 40 F S	19.62	42.6	32	G3/8"	100	26.0	9.0	42.5	steel	89.3
08 100 50 F B	19.62	70.6	32	G3/8"	100	30.5	15.0	47.0	steel	88.8
08 100 50 F S	19.62	70.6	32	G3/8"	100	30.5	15.0	47.0	steel	88.8

Compound: B= BENZ rubber; S = silicon



Note: The force of the vacuum cups indicated in the table represents 1/3 of the value of the theoretical force calculated at a level of vacuum of -75 KPa and a factor of safety 3.

Transformation ratio: N (newton) = Kg x 9.81 (force of gravity)

inch = $\frac{\text{mm}}{25.4}$; pounds = $\frac{\text{g}}{453.6} = \frac{\text{Kg}}{0.4536}$

Adapters for GAS - NPT threading available on page 1.130