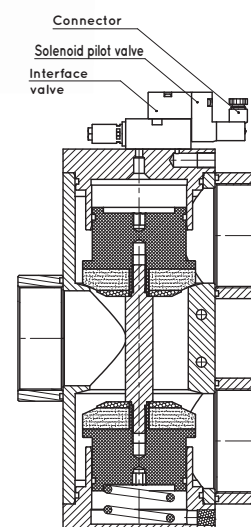
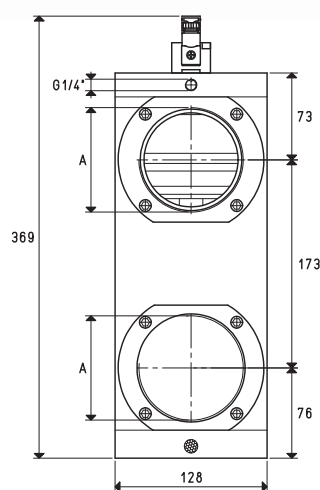
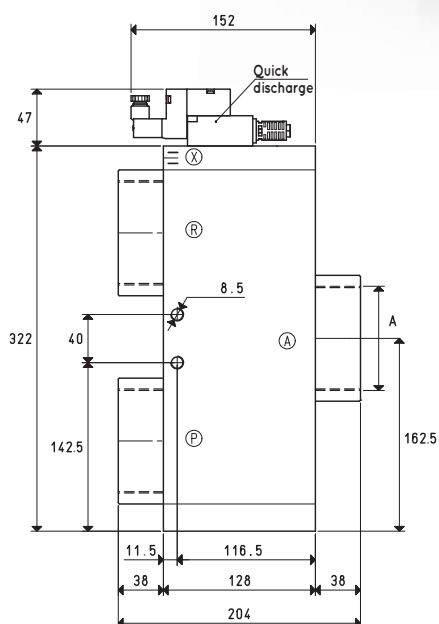
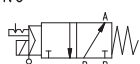


SERVO-CONTROLLED 3-WAY VACUUM SOLENOID VALVES WITH BISTABLE IMPULSE SOLENOID PILOT VALVE AND WITH LOW ABSORPTION ELECTRIC COIL FOR LARGE CAPACITIES

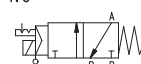


NC



X = Compressed air supply
P = Pump
A = Use
R = Discharge

NO



X = Compressed air supply
P = Discharge
A = Use
R = Pump

Item	A	Max flow rate	Level of vacuum	Reaction time	Mouth	Cross-section of passage	Pressure at servo-controlled	Weight
	Ø	m³/h	abs. mbar min max	msec energ. de-energ.	Ø	mm²	bar	Kg
07 09 53	G3"	750	1000 0.5	132 84	80	5024	4 ÷ 8	11.80

Note: Specify the voltage of the electric coil when ordering. (Example: 07 09 53 V24-CC)

The connector is not integral parts of the solenoid valve and, therefore, must be ordered separately (See accessories for solenoid valves).

Solenoid valve servo-controlled power must be supplied with non-lubricated compressed air, 5 micron filtration, according to standard ISO 8573-1 class 4.

Transformation ratio: N (newton) = Kg x 9.81 (force of gravity)

inch = $\frac{\text{mm}}{25.4}$; pounds = $\frac{\text{g}}{453.6} = \frac{\text{Kg}}{0.4536}$

Adapters for GAS - NPT threading available on page 1.130