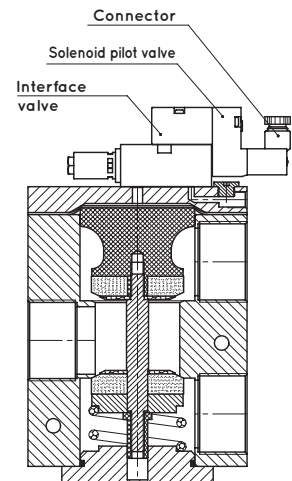
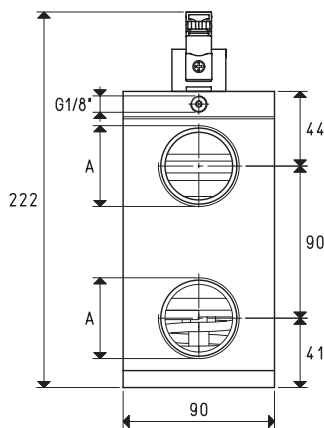
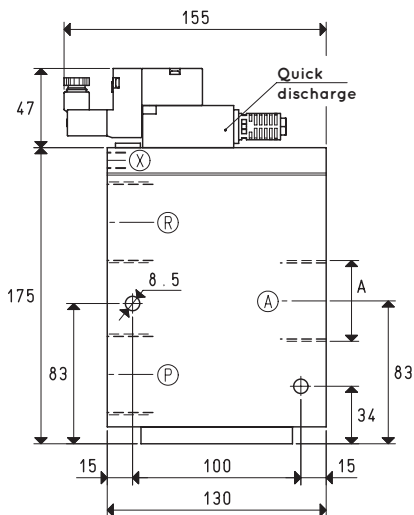
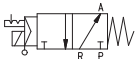


SERVO-CONTROLLED 3-WAY VACUUM SOLENOID VALVES WITH BISTABLE IMPULSE SOLENOID PILOT VALVE AND WITH LOW ABSORPTION ELECTRIC COIL

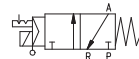


NC



X - Compressed air supply
P - Pump
A - Use
R - Discharge

NO



X - Compressed air supply
P - Discharge
A - Use
R - Pump

Item	A	Max flow rate	Level of vacuum		Reaction time		Mouth	Cross-section of passage	Pressure at servo-controlled	Weight
	Ø	m³/h	abs. mbar	min max	msec	energ. de-energ.	Ø	mm²	*bar	Kg
07 06 53	G1"1/2	230	1000	0.5	60	38	40	1256	6 ÷ 8	4.50

* Add the letters LP to the item for servo-controlled pressures 4 - 6 bar.

Note: Specify the voltage of the electric coil when ordering. (Example: 07 06 53 V24-CC)

The connector is not integral parts of the solenoid valve and, therefore, must be ordered separately (See accessories for solenoid valves).

Solenoid valve servo-controlled power must be supplied with non-lubricated compressed air, 5 micron filtration, according to standard ISO 8573-1 class 4.