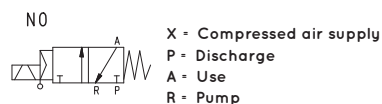
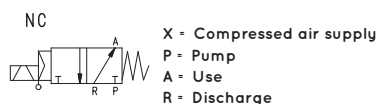
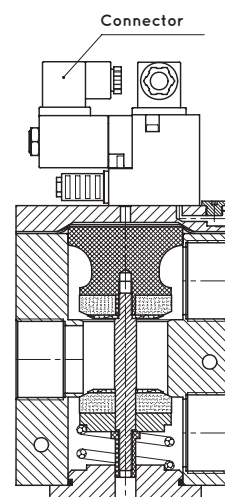
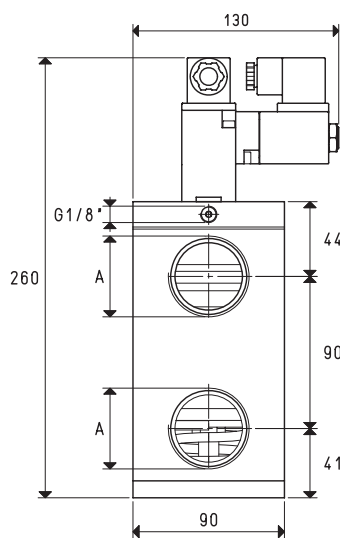
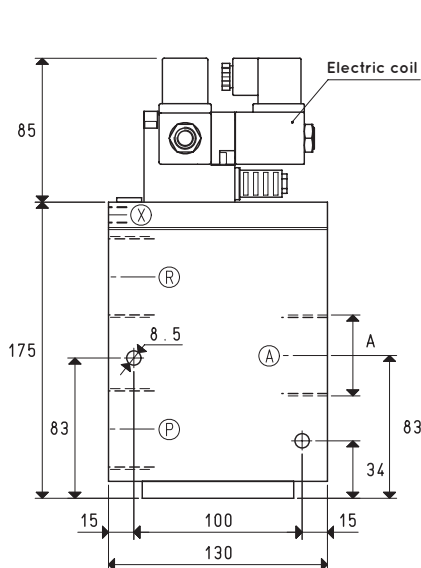


SERVO-CONTROLLED 3-WAY VACUUM SOLENOID VALVES WITH TWO ELECTRIC COILS



Item	A Ø	Max flow rate m³/h	Level of vacuum abs. mbar min max	Reaction time msec energ. de-energ.	Mouth Ø	Cross-section of passage mm²	Pressure at servo-controlled *bar	Weight Kg
07 06 51	G1" 1/2	230	1000 0.5	60 38	40	1256	6 ÷ 8	5.24

* Add the letters LP to the item for servo-controlled pressures 4 - 6 bar.

Note: The coils and the connectors are not integral parts of the solenoid valve and, therefore, must be ordered separately (See accessories for solenoid valves).

Solenoid valve servo-controlled power must be supplied with non-lubricated compressed air, 5 micron filtration, according to standard ISO 8573-1 class 4.