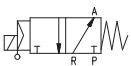
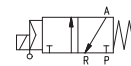


NC



X = Compressed air supply  
P = Pump  
A = Use  
R = Discharge

NO



X = Compressed air supply  
P = Discharge  
A = Use  
R = Pump

Item	A Ø	Max flow rate m <sup>3</sup> /h	Level of vacuum abs. mbar		Reaction time msec		Mouth Ø	Cross-section of passage mm <sup>2</sup>	Pressure at servo-controlled *bar	Weight Kg
			min	max	energ.	de-energ.				
<b>07 06 11</b>	G1" 1/2	230	1000	0.5	60	38	40	1256	6 ÷ 8	4.79

\* Add the letters LP to the item for servo-controlled pressures 4 - 6 bar.

Note: The coil and the connector are not integral parts of the solenoid valve and, therefore, must be ordered separately (See accessories for solenoid valves).

Solenoid valve servo-controlled power must be supplied with non-lubricated compressed air, 5 micron filtration, according to standard ISO 8573-1 class 4.

Transformation ratio: N (newton) = Kg x 9.81 (force of gravity)

inch =  $\frac{\text{mm}}{25.4}$  ; pounds =  $\frac{\text{g}}{453.6} = \frac{\text{Kg}}{0.4536}$

Adapters for GAS - NPT threading available on page 1.130