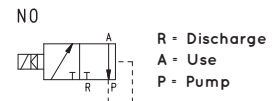
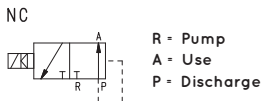
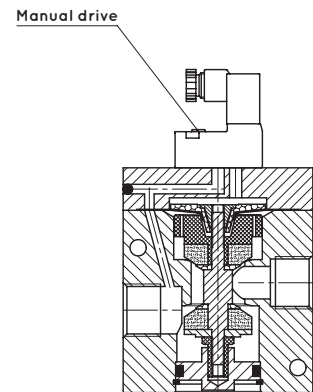
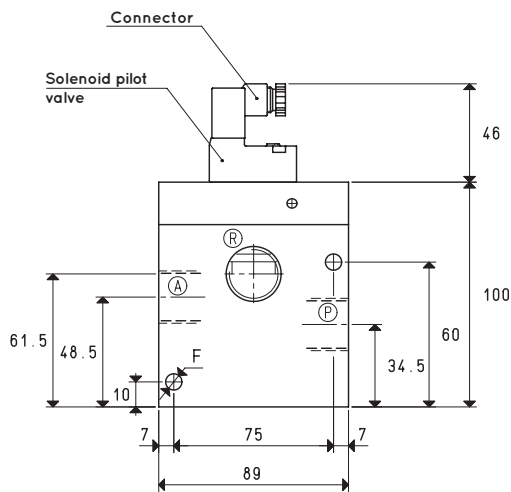


DIRECT DRIVE 3-WAY VACUUM SOLENOID VALVES WITH LOW ABSORPTION ELECTRIC COIL



Item	A Ø	Max flow rate m³/h	Level of vacuum abs. mbar		Reaction time msec		Mouth Ø	Cross-section of passage mm²	F Ø	Weight Kg
			min	max	energ.	de-energ.				
07 05 43 NC	G1"	90	850	0.5	42	20	25	490	6.5	1.65
07 05 43 NO					28	22				

Note: Specify the voltage of the electric coil when ordering. (Example: 07 05 43 NC V24-CC)

The connector is not integral parts of the solenoid valve and, therefore, must be ordered separately (See accessories for solenoid valves).