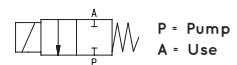


2 / 2 NC



2-WAY SOLENOID PILOT VALVES

Item	A Ø	Max flow rate m ³ /h	Level of vacuum		Reaction time		Mouth Ø	Cross-section of passage mm ²	B	E	H	I	Weight g
			abs. mbar min	max	msec energ.	msec de-energ.							
07 01 20	G1/4"	4	1000	0.5	15	8	6	28.3	73	86	25	67	244

Note: The coil and the connector are not integral parts of the solenoid pilot valve and, therefore, must be ordered separately (See accessories for solenoid valves).

Transformation ratio: N (newton) = Kg x 9.81 (force of gravity)

$$\text{inch} = \frac{\text{mm}}{25.4}; \text{pounds} = \frac{\text{g}}{453.6} = \frac{\text{Kg}}{0.4536}$$

Adapters for GAS - NPT threading available on page 1.130