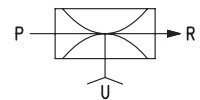
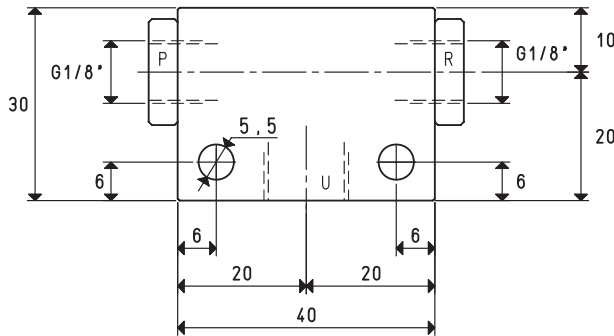
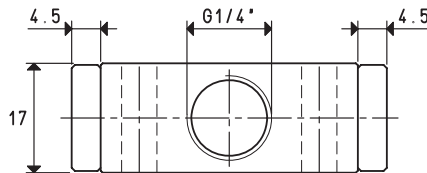


# SINGLE-STAGE VACUUM GENERATOR PVP 2



3D drawings are available on [vuototecnica.net](http://vuototecnica.net)



P=COMPRESSED AIR CONNECTION      R=EXHAUST      U=VACUUM CONNECTION

Item		PVP 2		
Intake air flow rate	m <sup>3</sup> /h	2.8	2.9	3.0
Maximum level of vacuum	-KPa	60	70	85
Final pressure	mbar abs.	400	300	150
Supply pressure	bar	4	5	6
Optimal supply pressure	bar		6	6
Air consumption	NI/s	0.7	0.8	0.9
Operating temperature	°C			-20 / +80
Noise level at optimal supply pressure	dB(A)			78
Weight	g			70

Note: All vacuum values indicated in the table are valid at the normal atmospheric pressure of 1013 mbar and obtained with a constant supply pressure.

Vacuum generator supply must be carried out with non-lubricated compressed air, 5 micron filtration, in accordance with standard ISO 8573-1 class 4.

Transformation ratio: N (newton) = Kg x 9.81 (force of gravity)

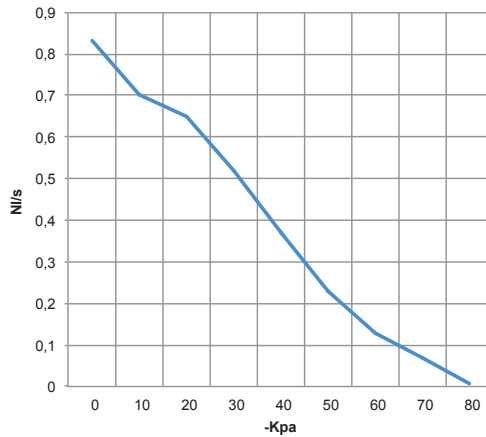
inch =  $\frac{\text{mm}}{25.4}$  ; pounds =  $\frac{\text{g}}{453.6} = \frac{\text{Kg}}{0.4536}$

Adapters for GAS - NPT threading available on page 1.130



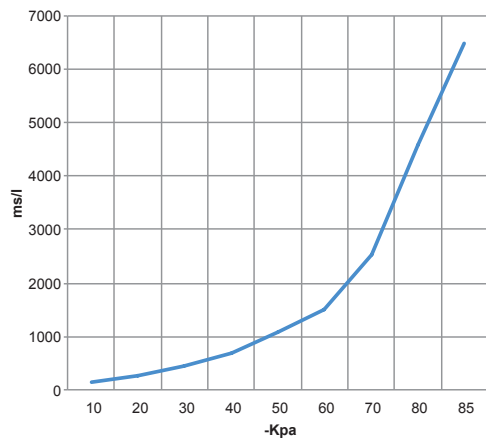
# SINGLE-STAGE VACUUM GENERATOR PVP 2

Air flow rate (NI/s) at different level of vacuum (-KPa) at optimal supply pressure



Generator item	Supp. press. bar	Air consumption NI/s	Air flow rate (NI/s) at different levels of vacuums (-KPa) at optimal supply pressure										Max vacuum -KPa
			0	10	20	30	40	50	60	70	80		
PVP 2	6.0	0.9	0.83	0.70	0.65	0.52	0.37	0.23	0.13	0.07	--	85	

Evacuation rates (ms/l = s/m<sup>3</sup>) at different levels of vacuums (-KPa) at optimal supply pressure



Generator item	Supp. press. bar	Air consumption NI/s	Evacuation rates (ms/l= s/m <sup>3</sup> ) at different levels of vacuums (-KPa) at optimal supply pressure										Max vacuum -KPa
			10	20	30	40	50	60	70	80	85		
PVP 2	6.0	0.9	128	257	438	675	1087	1511	2523	4572	6492	85	

## ACCESSORIES UPON REQUEST

Silencer item SSX 1/8"

