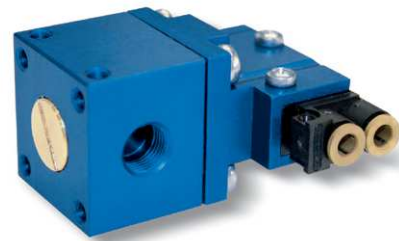
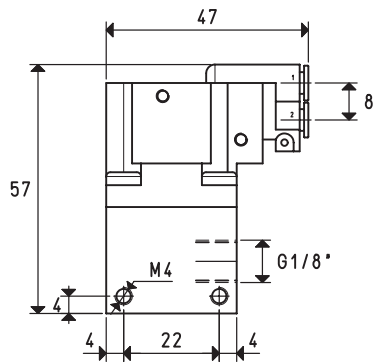




① - MINI PNEUMATIC VACUUM SWITCH

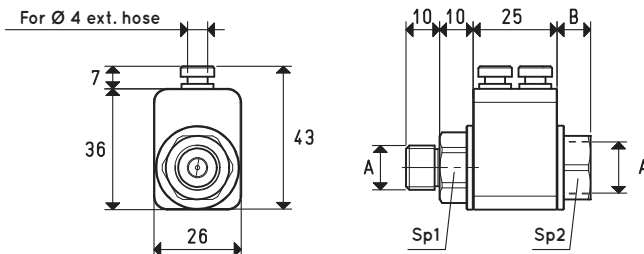
The vacuum switch has the task of removing a pneumatic signal when a specific adjustable level of vacuum is reached. The pressure differential existing between the set maximum value and that of restoring the signal at rest is not adjustable and is equal to about 100 mbar. The pneumatic vacuum switch, installed on the vacuum generators PVP 25 - 75 MDX / MDXLP acting on the coaxial shutter supply valve automatically maintains the maximum and minimum level of vacuum within the differential value.



Item	For generator item	Weight g
12 01 30 X	PVP 25 ÷ 75 MDX/MDXLP	104

② - COAXIAL SHUTTER SERVO-CONTROLLED SUPPLY VALVE

These coaxial shutter valves, pneumatically driven by a vacuum switch or an alternative source, are able to intercept the compressed air supply to the vacuum generators, with pressures between 1.5 and 7 bar. They must be chosen based on the generator power supply connection and the required air quantity.



Item	A Ø	B	ch1	ch2	For generator item	Weight g
07 01 71	G 1/4"	10	19	19	PVP 25 ÷ 50 MDX/MDXLP	72
07 02 71	G 3/8"	15	19	19	PVP 50 ÷ 75 MDX/MDXLP	70