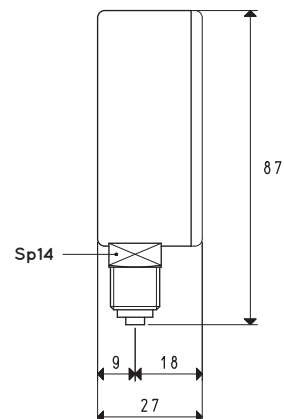
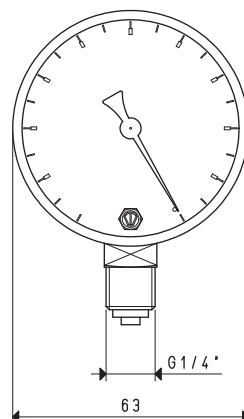




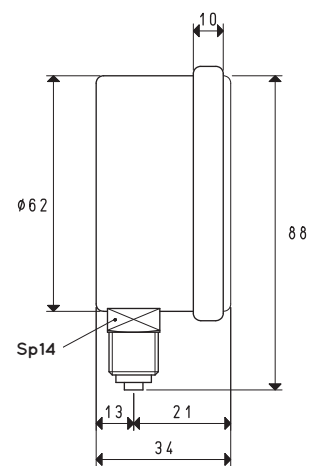
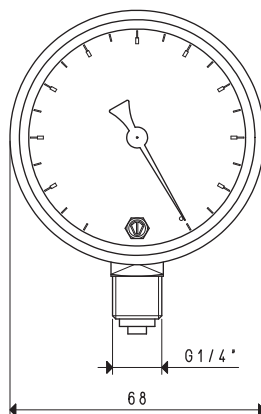
VACUUM GAUGES

3D drawings are available on vuotecnica.net



VACUUM GAUGE

Item	Scale mbar	Double Scale KPa	Admissable scale error	Temperature of use	Notes	Case material	Weight g
09 05 10	0 ÷ -1000	0 ÷ -100	2.5%	-10 °C ÷ +50 °C	dry	black plastic	136



VACUUM GAUGE

Item	Scale mbar	Double Scale KPa	Admissable scale error	Temperature of use	Notes	Case material	Weight g
09 05 16	0 ÷ -1000	0 ÷ -100	1.6%	-10 °C ÷ +50 °C	in glycerine bath	stainless steel	218

Transformation ratio: N (newton) = Kg x 9.81 (force of gravity)

inch = $\frac{\text{mm}}{25.4}$; pounds = $\frac{\text{g}}{453.6} = \frac{\text{Kg}}{0.4536}$

Adapters for GAS - NPT threading available on page 1.130