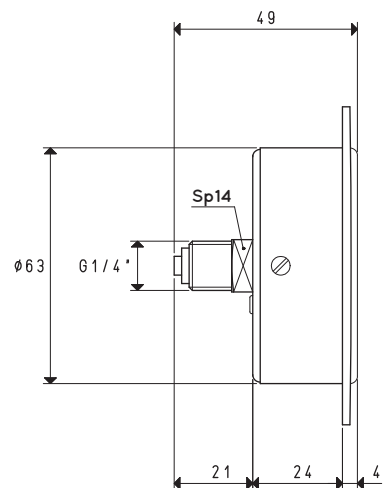
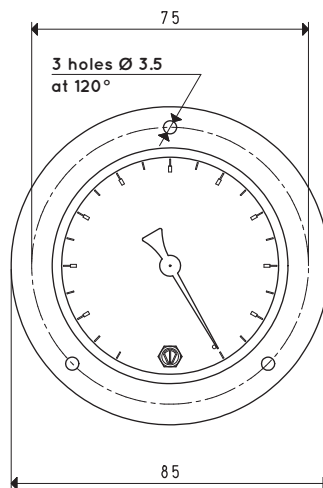


VACUUM GAUGE

Item	Scale mbar	Double Scale KPa	Admissable scale error	Temperature of use	Notes	Case material	Weight g
09 03 10	0 ÷ -1000	0 ÷ -100	2.5%	-10 °C ÷ +50 °C	dry	black plastic	134



VACUUM GAUGE

Item	Scale mbar	Double Scale KPa	Admissable scale error	Temperature of use	Notes	Case material	Flange material	Weight g
09 01 10	0 ÷ -1000	0 ÷ -100	2.5%	-10 °C ÷ +50 °C	dry	black plastic	chrome-plated steel	162