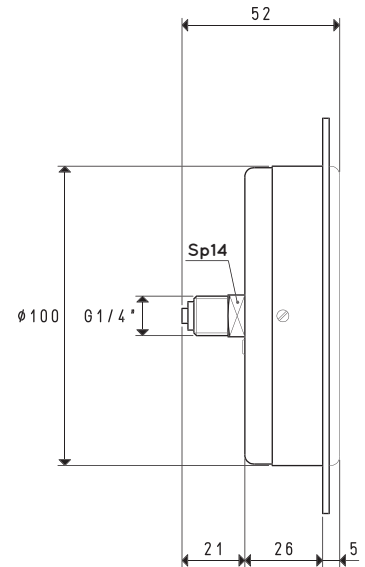
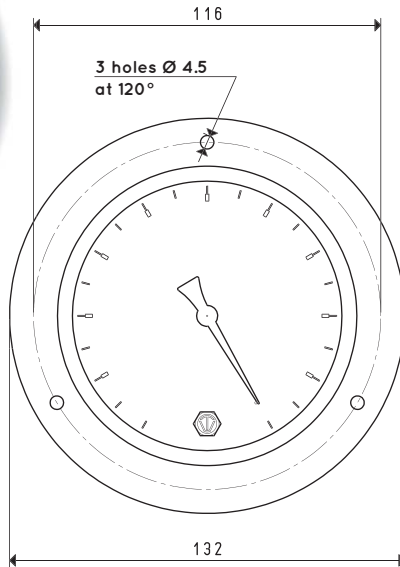


VACUUM GAUGE

Item	Scale mbar	Double Scale KPa	Admissible scale error	Temperature of use	Notes	Case material	Flange material	Weight g
09 01 16	0 ÷ -1000	0 ÷ -100	1.6%	-10 °C ÷ +50 °C	in glycerine bath	Die-cast brass	chrome-plated steel	348



VACUUM GAUGE

Item	Scale mbar	Double Scale KPa	Admissible scale error	Temperature of use	Notes	Case and flange material	Weight g
09 02 10	0 ÷ -1000	0 ÷ -100	1%	-10 °C ÷ +50 °C	dry	black steel	346